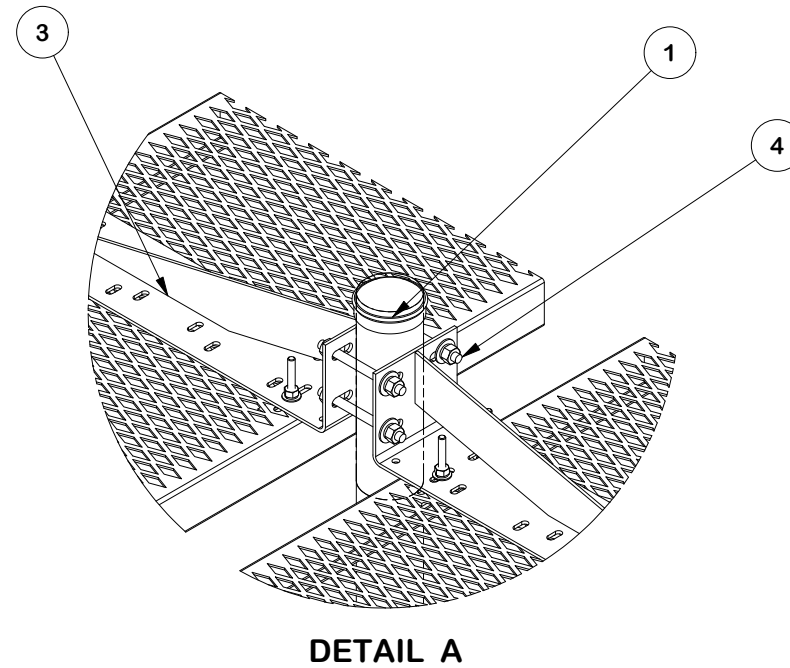
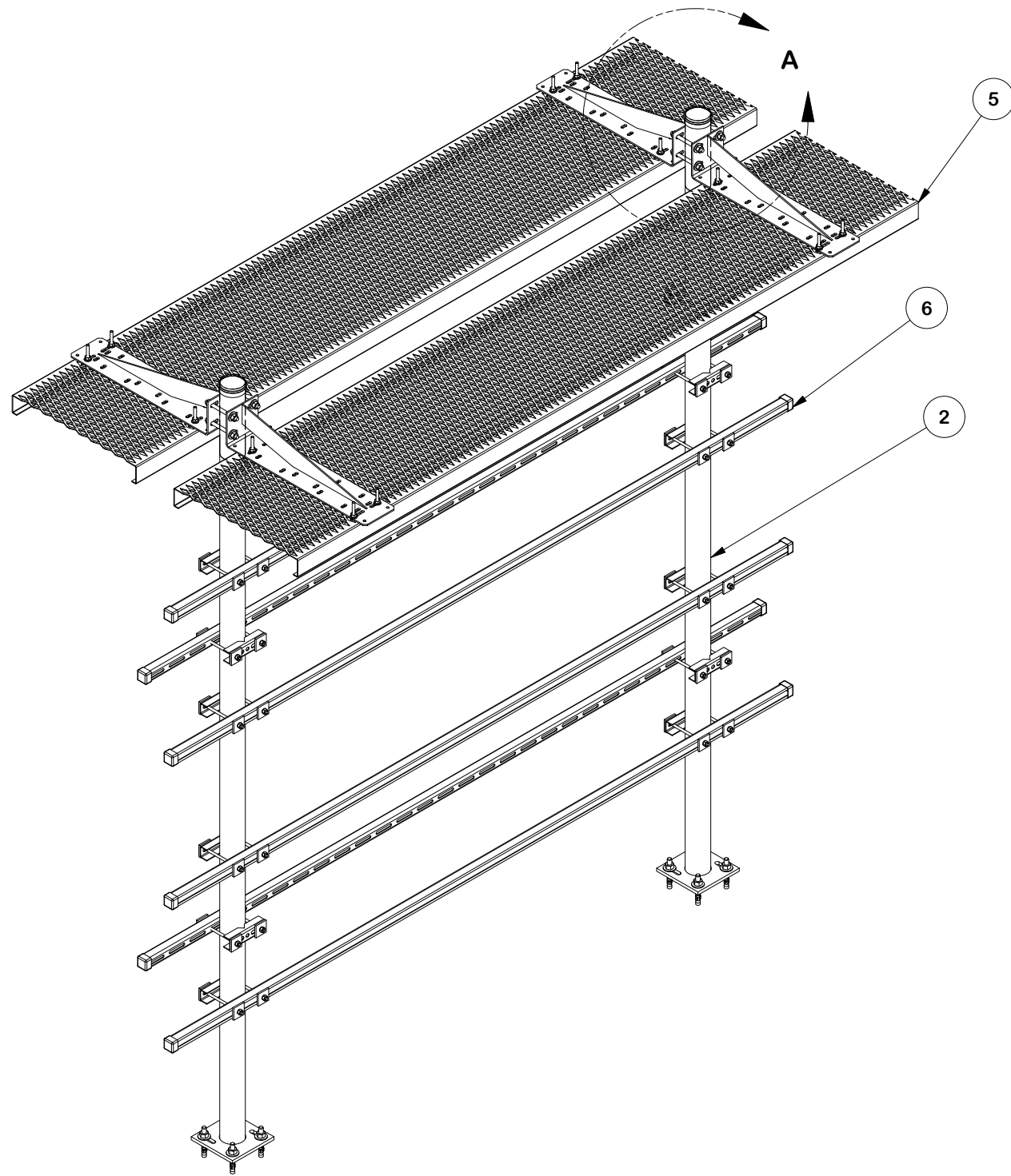
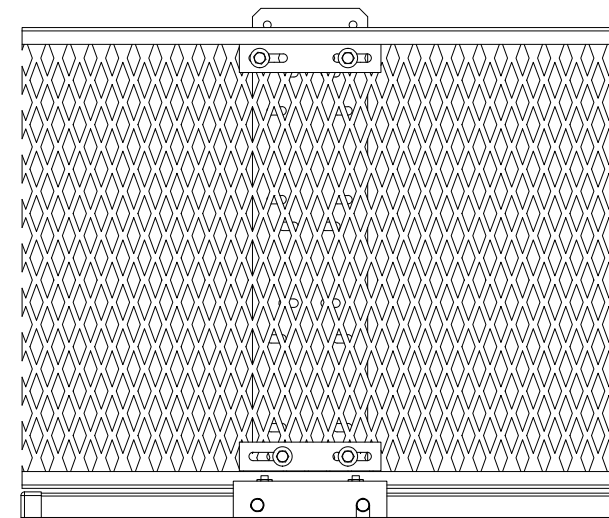


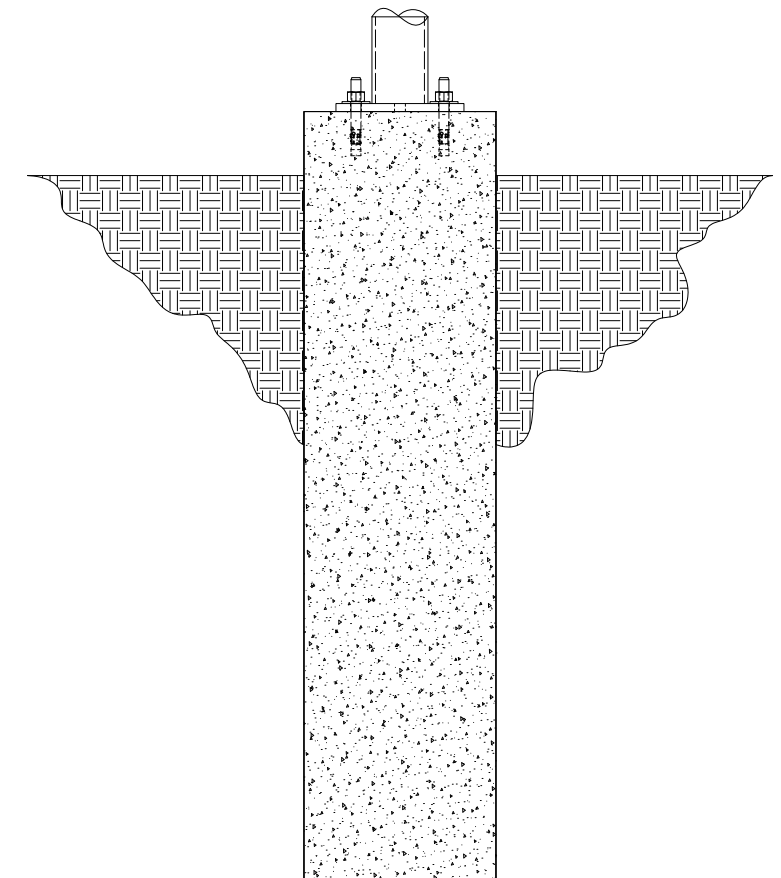
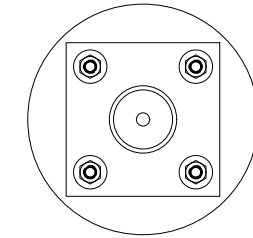
PARTS LIST									
ITEM	QTY	PART NO.	BOX NO.	PART DESCRIPTION	LENGTH	UNIT WT.	NET WT.		
1	2	PC312		3-1/2" FENCE POST CAP		0.59	1.17		
2	2	MPOST-B		BASE SHOE PIPE COLUMN	126 in	94.72	189.45		
3	4	HHD24-K	P-HHD24-K	24" COMPLETE CANTILEVER KIT		18.01	72.05		
4	8	G12R-6		1/2" x 6" GALV. THREADED ROD		0.33	2.68		
5	2	GRS24		24" X 10" GRIP SPAN BRIDGE CHANNEL	120 in	91.86	183.71		
6	6	UNT10-HFK		UNISTRUT H-FRAME KIT (120")		25.80	154.80		
						TOTAL WT. #	562.68		



DETAIL A



UNDERSIDE ATTACHEMENT



REFERENCE ONLY

FINISH:
HOT DIP GALVANIZED.

TOLERANCE NOTES

TOLERANCES ON DIMENSIONS, UNLESS OTHERWISE NOTED ARE:
 SAWED, SHEARED AND GAS CUT EDGES ($\pm 0.030"$)
 DRILLED AND GAS CUT HOLES ($\pm 0.030"$) - NO CONING OF HOLES
 LASER CUT EDGES AND HOLES ($\pm 0.010"$) - NO CONING OF HOLES
 BENDS AND ANGLES ARE $\pm 1/2$ DEGREE
 ALL OTHER MACHINING ($\pm 0.030"$)
 ALL OTHER ASSEMBLY ($\pm 0.060"$)

PATENT INFORMATION: WWW.SITEPRO1.COM/PATENTS

PROPRIETARY NOTE:
 THE DATA AND TECHNIQUES CONTAINED IN THIS DRAWING ARE PROPRIETARY INFORMATION OF VALMONT INDUSTRIES AND CONSIDERED A TRADE SECRET. ANY USE OR DISCLOSURE WITHOUT THE CONSENT OF VALMONT INDUSTRIES IS STRICTLY PROHIBITED.

DESCRIPTION
48" WIDE DUAL ICE-BRIDGE H-FRAME BOLT-DOWN POST

CPD NO. SP1	DRAWN BY SDR 1/15/2025	ENG. APPROVAL 3/26/2025
CLASS 81	SUB 02	DRAWING USAGE CUSTOMER
CHECKED BY JET 3/26/2025		

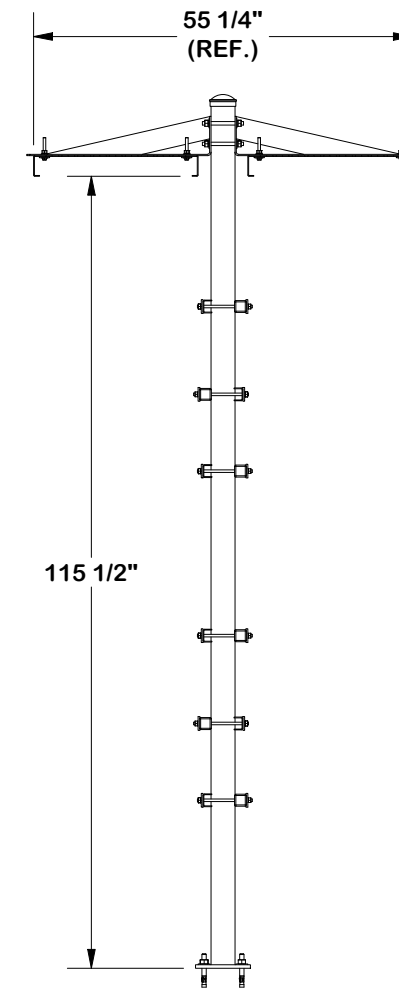
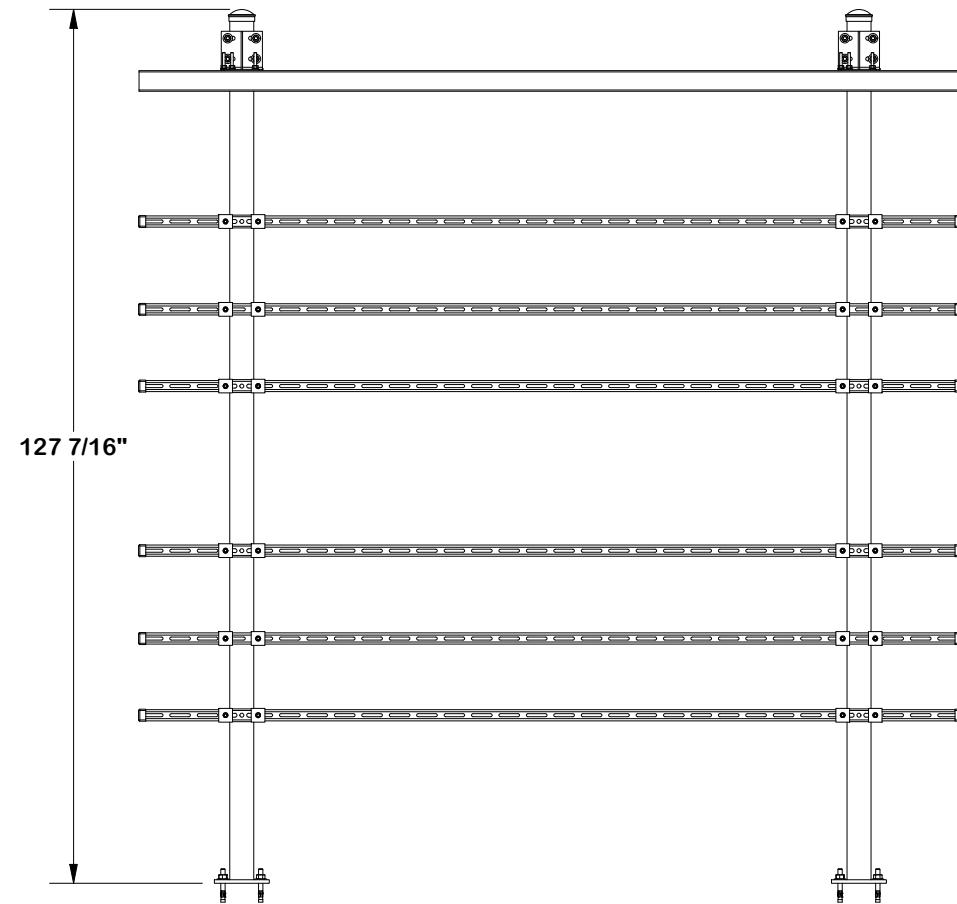
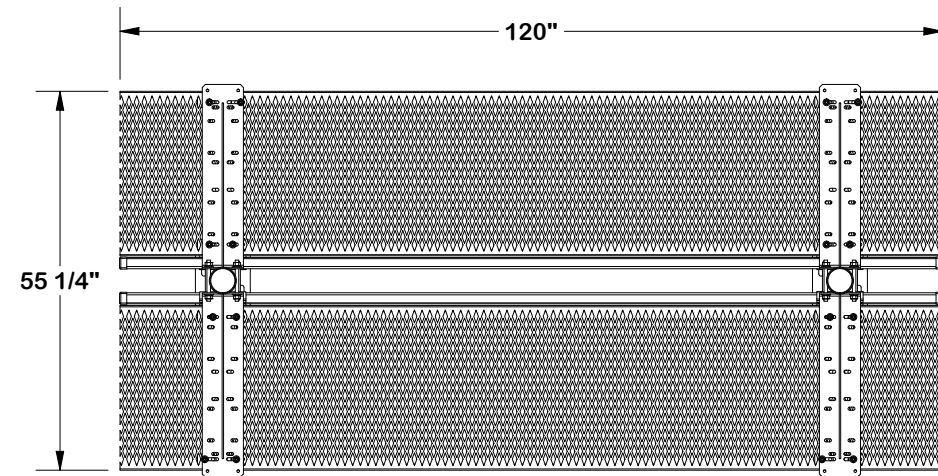


Engineering Support Team:
 sp1engineering@valmont.com

PART NO. ERIB48B
DWG. NO. ERIB48B

REV	DESCRIPTION OF REVISIONS	CPD	BY	DATE
A	SP126 SWAPPED WITH MPOST-B	SP1	JET	5/13/2026

REVISION HISTORY



TOLERANCE NOTES

TOLERANCES ON DIMENSIONS, UNLESS OTHERWISE NOTED ARE:
 SAWED, SHEARED AND GAS CUT EDGES ($\pm 0.030"$)
 DRILLED AND GAS CUT HOLES ($\pm 0.030"$) - NO CONING OF HOLES
 LASER CUT EDGES AND HOLES ($\pm 0.010"$) - NO CONING OF HOLES
 BENDS AND ANGLES ARE $\pm 1/2$ DEGREE
 ALL OTHER MACHINING ($\pm 0.030"$)
 ALL OTHER ASSEMBLY ($\pm 0.060"$)

PATENT INFORMATION: WWW.SITEPRO1.COM/PATENTS

PROPRIETARY NOTE:
 THE DATA AND TECHNIQUES CONTAINED IN THIS DRAWING ARE PROPRIETARY INFORMATION OF VALMONT INDUSTRIES AND CONSIDERED A TRADE SECRET. ANY USE OR DISCLOSURE WITHOUT THE CONSENT OF VALMONT INDUSTRIES IS STRICTLY PROHIBITED.

DESCRIPTION
**48" WIDE DUAL ICE-BRIDGE H-FRAME
 BOLT-DOWN POST**

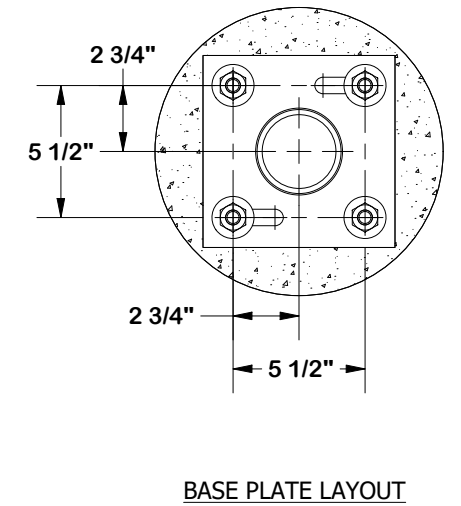
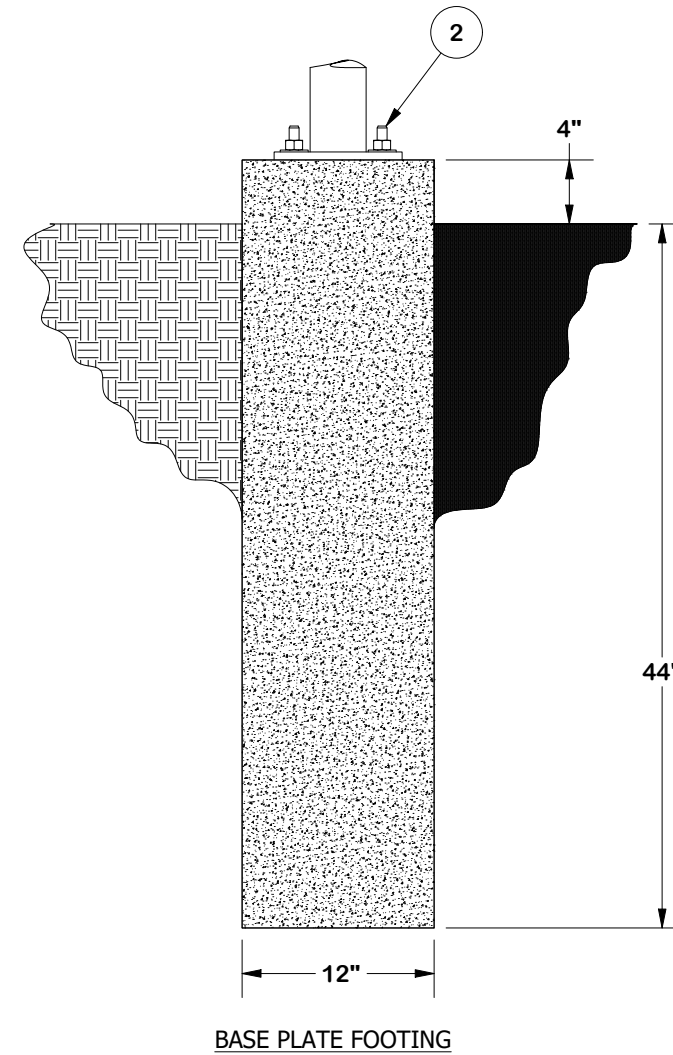
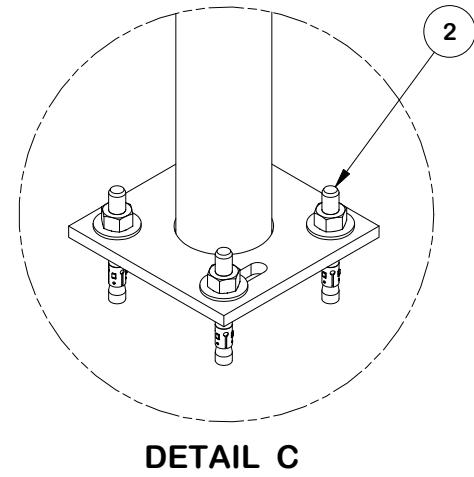
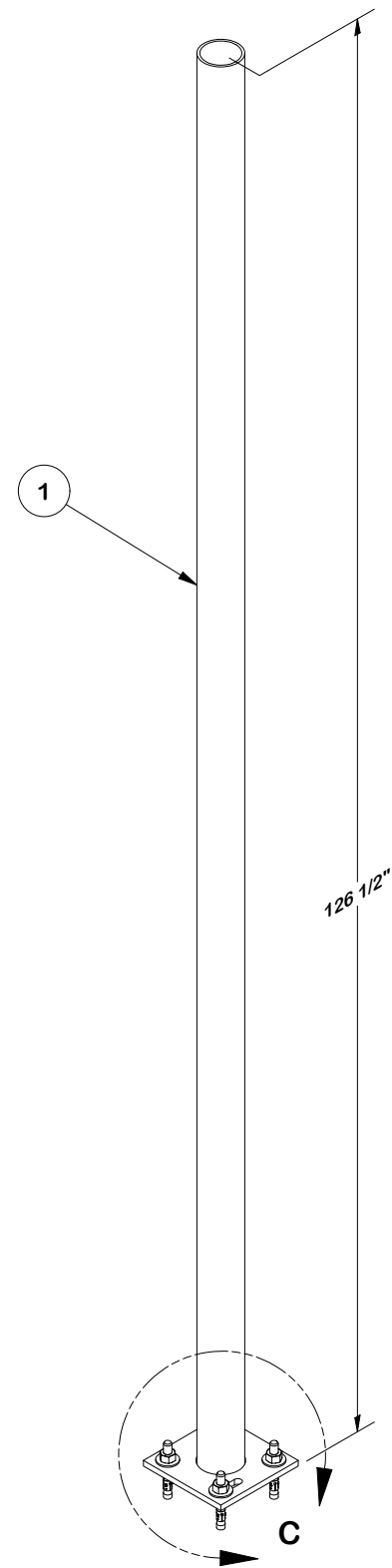
CPD NO. SP1	DRAWN BY SDR 1/15/2025	ENG. APPROVAL 3/26/2025
CLASS 81	SUB 02	DRAWING USAGE CUSTOMER
	CHECKED BY JET	3/26/2025

SITE PRO 1
 A valmont COMPANY

Engineering Support Team:
 sp1engineering@valmont.com

PART NO. ERIB48B
DWG. NO. ERIB48B

PARTS LIST					
ITEM	QTY	PART NO.	PART DESCRIPTION	UNIT WT.	NET WT.
1	1	X-MPOST	SUPPORT POST FOR EQUIPMENT PLATFORM ICE BRIDGE KITS	92.18	92.18
2	4	SWA585	5/8" X 5" STAINLESS WEDGE ANCHOR	0.64	2.55
TOTAL WT. #				94.72	



TOLERANCE NOTES

TOLERANCES ON DIMENSIONS, UNLESS OTHERWISE NOTED ARE:
 SAWED, SHEARED AND GAS CUT EDGES ($\pm 0.030"$)
 DRILLED AND GAS CUT HOLES ($\pm 0.030"$) - NO CONING OF HOLES
 LASER CUT EDGES AND HOLES ($\pm 0.010"$) - NO CONING OF HOLES
 BENDS AND ANGLES ARE $\pm 1/2$ DEGREE
 ALL OTHER MACHINING ($\pm 0.030"$)
 ALL OTHER ASSEMBLY ($\pm 0.060"$)

PATENT INFORMATION: WWW.SITEPRO1.COM/PATENTS

PROPRIETARY NOTE:
 THE DATA AND TECHNIQUES CONTAINED IN THIS DRAWING ARE PROPRIETARY INFORMATION OF VALMONT INDUSTRIES AND CONSIDERED A TRADE SECRET. ANY USE OR DISCLOSURE WITHOUT THE CONSENT OF VALMONT INDUSTRIES IS STRICTLY PROHIBITED.

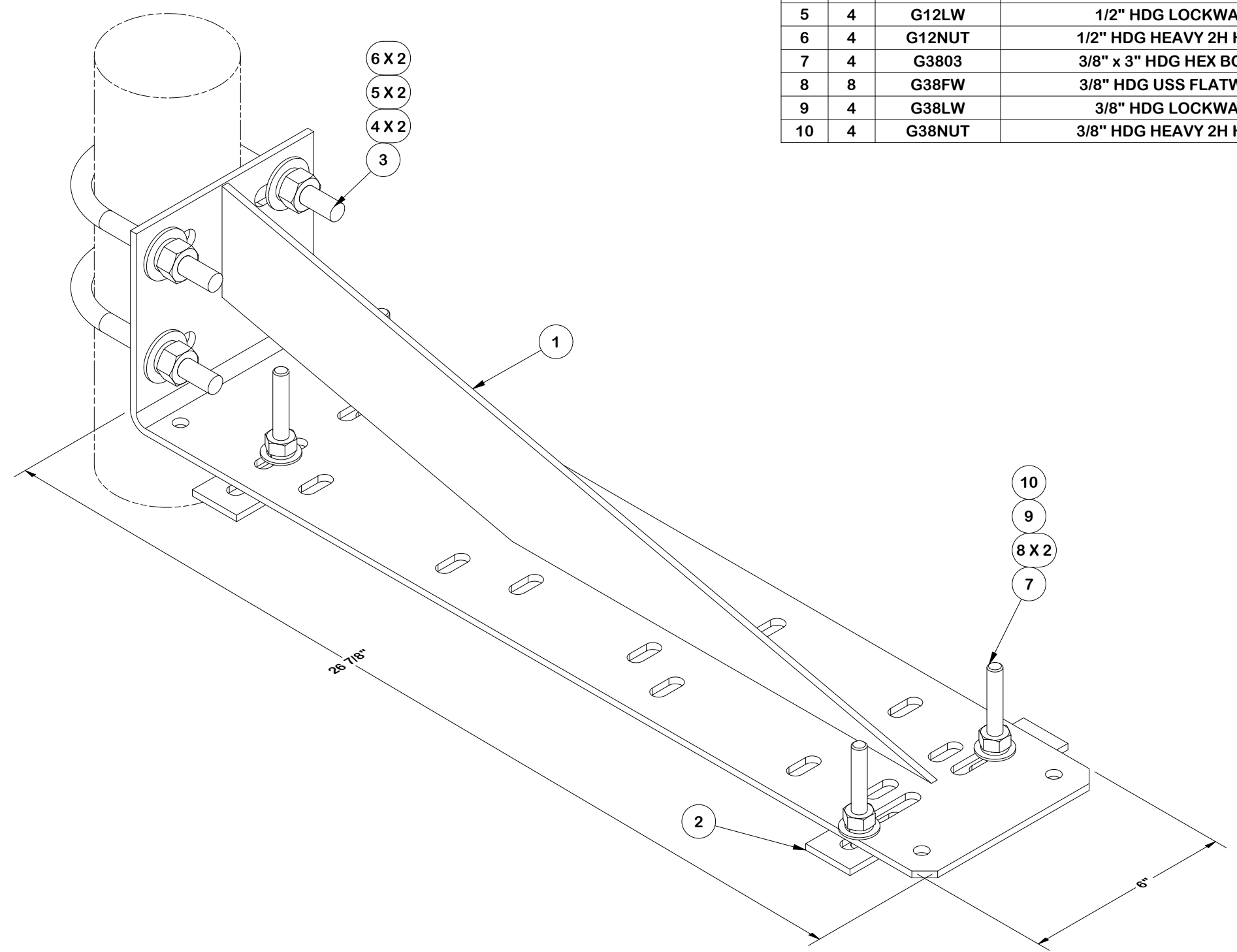
DESCRIPTION
48" WIDE DUAL ICE-BRIDGE H-FRAME BOLT-DOWN POST

SITE PRO 1
 Engineering Support Team:
 sp1engineering@valmont.com
 A valmont COMPANY

CPD NO. SP1	DRAWN BY SDR 1/15/2025	ENG. APPROVAL 3/26/2025
CLASS 81	SUB 02	DRAWING USAGE CUSTOMER
	CHECKED BY JET 3/26/2025	

PART NO. MPOST-B	PAGE 3 OF 5
DWG. NO. ERIB48B	

PARTS LIST						
ITEM	QTY	PART NO.	PART DESCRIPTION	LENGTH	UNIT WT.	NET WT.
1	1	HHD24	24" UNIVERSAL CANTILEVER		14.10	14.10
2	2	SPLICE	SPLICE FOR GRIP STRUT	7 3/8 in	0.53	1.06
3	2	X-UB1358	1/2" X 3-5/8" X 5-1/2" X 3" U-BOLT	5 1/2 in	0.82	1.64
4	4	G12FW	1/2" HDG USS FLATWASHER	3/32 in	0.03	0.14
5	4	G12LW	1/2" HDG LOCKWASHER	1/8 in	0.01	0.06
6	4	G12NUT	1/2" HDG HEAVY 2H HEX NUT	7/8 in	0.07	0.29
7	4	G3803	3/8" x 3" HDG HEX BOLT GR5		0.12	0.48
8	8	G38FW	3/8" HDG USS FLATWASHER		0.01	0.09
9	4	G38LW	3/8" HDG LOCKWASHER		0.01	0.03
10	4	G38NUT	3/8" HDG HEAVY 2H HEX NUT		0.03	0.14
TOTAL WT. #						17.91



TOLERANCE NOTES

TOLERANCES ON DIMENSIONS, UNLESS OTHERWISE NOTED ARE:
 SAWED, SHEARED AND GAS CUT EDGES ($\pm 0.030"$)
 DRILLED AND GAS CUT HOLES ($\pm 0.030"$) - NO CONING OF HOLES
 LASER CUT EDGES AND HOLES ($\pm 0.010"$) - NO CONING OF HOLES
 BENDS AND ANGLES ARE $\pm 1/2$ DEGREE
 ALL OTHER MACHINING ($\pm 0.030"$)
 ALL OTHER ASSEMBLY ($\pm 0.060"$)

PATENT INFORMATION: WWW.SITEPRO1.COM/PATENTS

DESCRIPTION

**48" WIDE DUAL ICE-BRIDGE H-FRAME
 BOLT-DOWN POST**

SITE PRO 1
 A valmont COMPANY

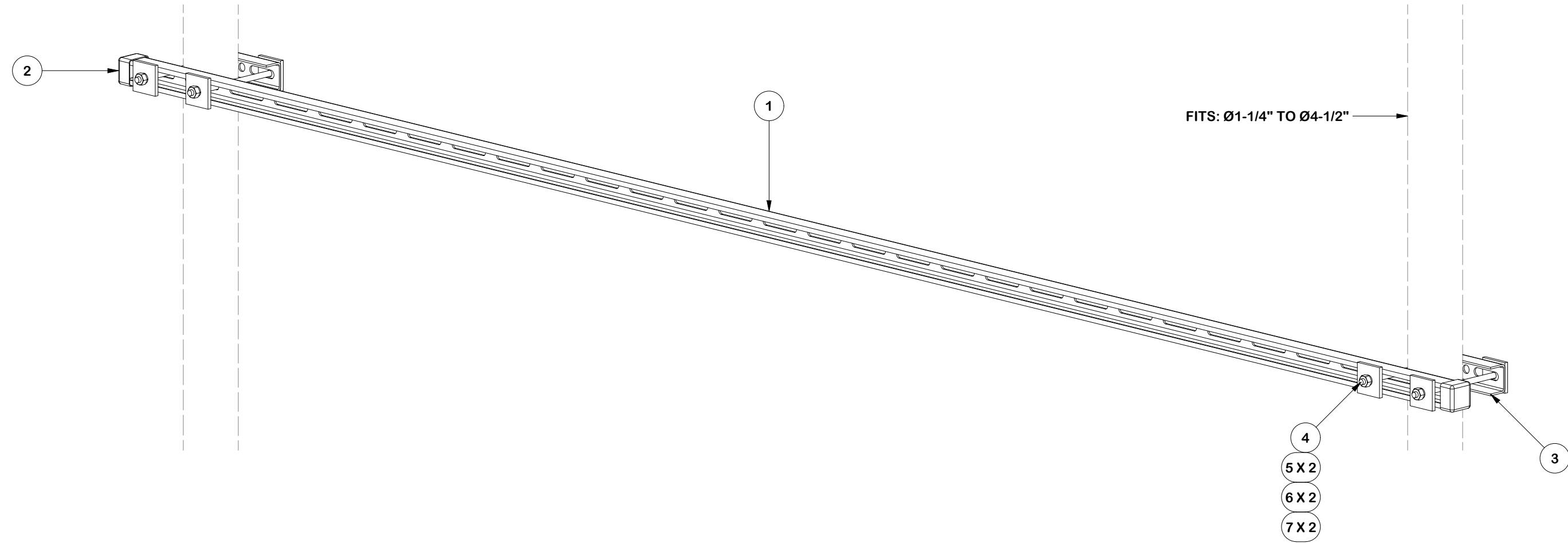
Engineering Support Team:
 sp1engineering@valmont.com

PROPRIETARY NOTE:
 THE DATA AND TECHNIQUES CONTAINED IN THIS DRAWING ARE PROPRIETARY INFORMATION OF VALMONT INDUSTRIES AND CONSIDERED A TRADE SECRET. ANY USE OR DISCLOSURE WITHOUT THE CONSENT OF VALMONT INDUSTRIES IS STRICTLY PROHIBITED.

CPD NO.	DRAWN BY	ENG. APPROVAL
SP1	SDR 1/15/2025	3/26/2025
CLASS	DRAWING USAGE	CHECKED BY
81	CUSTOMER	JET 3/26/2025

PART NO.	HHD24-K
DWG. NO.	ERIB48B


PARTS LIST						
ITEM	QTY	PART NO.	PART DESCRIPTION	LENGTH	UNIT WT.	NET WT.
1	1	UNT10	UNISTRUT 1-5/8" X 1-5/8" EG	120 in	20.38	20.38
2	2	UNICAP	UNISTRUT END CAP		0.03	0.06
3	2	X-UPC1	SMALL PIPE TO PIPE BRACKET	6 3/4 in	0.86	1.71
4	4	G38R-8	3/8" X 8" THREADED ROD (HDG.)		0.25	1.00
5	8	SQW38	3/8" SQUARE WASHER	2 in	0.29	2.31
6	8	G38LW	3/8" HDG LOCKWASHER		0.01	0.05
7	8	G38NUT	3/8" HDG HEAVY 2H HEX NUT		0.03	0.27
TOTAL WT. #						25.82



REV	DESCRIPTION OF REVISIONS	CPD	BY	DATE
A	CHANGED U-BOLT TO UPC1	SP1	SDR	6/20/2025
REVISION HISTORY				

TOLERANCE NOTES				
TOLERANCES ON DIMENSIONS, UNLESS OTHERWISE NOTED ARE: SAWED, SHEARED AND GAS CUT EDGES ($\pm 0.030"$) DRILLED AND GAS CUT HOLES ($\pm 0.030"$) - NO CONING OF HOLES LASER CUT EDGES AND HOLES ($\pm 0.010"$) - NO CONING OF HOLES BENDS AND ANGLES ARE $\pm 1/2$ DEGREE ALL OTHER MACHINING ($\pm 0.030"$) ALL OTHER ASSEMBLY ($\pm 0.060"$)				
PATENT INFORMATION: WWW.SITEPRO1.COM/PATENTS				
PROPRIETARY NOTE: THE DATA AND TECHNIQUES CONTAINED IN THIS DRAWING ARE PROPRIETARY INFORMATION OF VALMONT INDUSTRIES AND CONSIDERED A TRADE SECRET. ANY USE OR DISCLOSURE WITHOUT THE CONSENT OF VALMONT INDUSTRIES IS STRICTLY PROHIBITED.				

DESCRIPTION			
48" WIDE DUAL ICE-BRIDGE H-FRAME BOLT-DOWN POST			
CPD NO.	DRAWN BY	ENG. APPROVAL	
SP1	SDR 1/15/2025	3/26/2025	
CLASS	SUB	DRAWING USAGE	CHECKED BY
81	02	CUSTOMER	JET 3/26/2025

 A valmont COMPANY		Engineering Support Team: sp1engineering@valmont.com	
PART NO.		UNT10-HFK	
DWG. NO.		ERIB48B	